

Key

Find a value for the variable that makes the statement true. Then tell the property the equation represents.

1. $0+5m=5(11)$

$m=11$

Additive Identity

2. $-(-(-7))=n$

$n=-7$

Op-op

Always, Sometimes, or Never

3. Supplementary angles are Sometimes adjacent.

4. A rhombus is Sometimes a rectangle.

5. Two angles whose measures have the sum of 180° are always supplementary.

6. A parallelogram is always a trapezoid.

7. Let M = the set of all tigers and N = the set of all animals.

a. Find $M \cap N$.

Set of all tigers

b. Find $M \cup N$.

Set of all animals

True or False

8. $6.7 \cdot 10^{-4}$ is a negative number.

F

9. The ratio of the circumference of a circle to its radius is a rational number.

F

10. Write the converse of the following statement.

a. If there is a tornado, then the town will be ruined.

If the town is ruined, there was a
No tornado.

b. Is the converse always true.

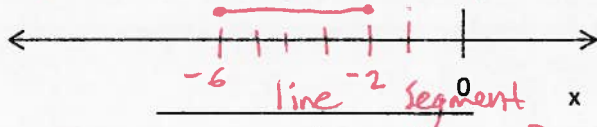
11. Use the following information to write a definition for a square.

a. If a figure is a square, then it has equal sides and equal angles.

All Squares have equal sides and equal
No, doesn't say how many sides. angles.

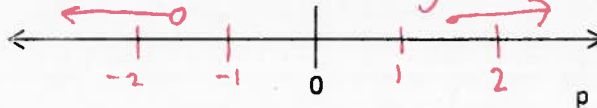
b. Is this a good definition? Explain

12. a. Graph the set of all numbers x such that $-6 \leq x \leq -2$.



b. Describe the graph geometrically (what is it?).

13. Graph the set of all numbers p such that $p \geq 1.5$ or $p < -1.5$.

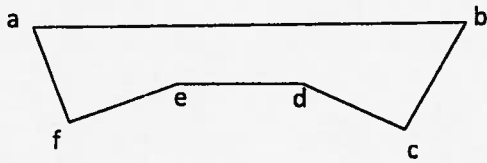


14. Write an inequality based on the number line below.



$x \leq 3.26$

15. a. Classify the figure below according to the number of sides it has.



Hexagon

b. Name its sides.

AB, BC, CD, DE, EF, FA

c. Give two names for the figure.

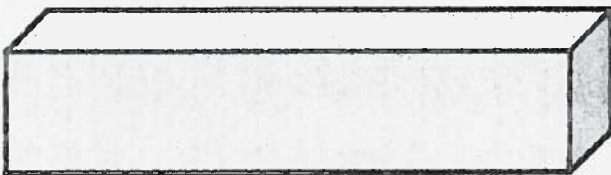
ABCDEF

BCDEFA

16. Give an example of a number that is an integer but not a whole number.

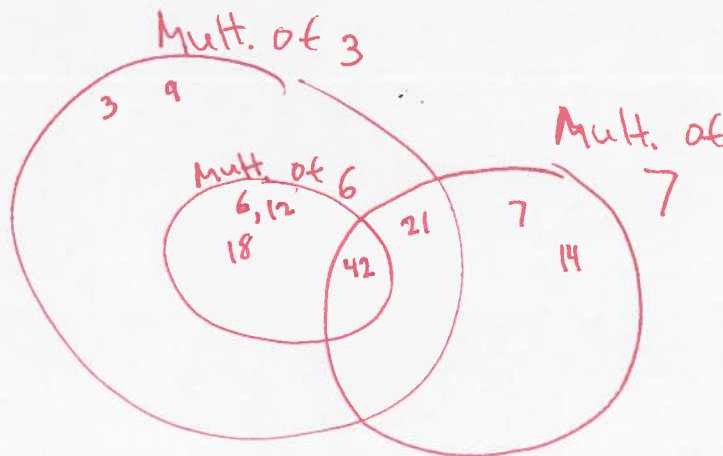
-5

17. Explain why the figure below is not a polygon.



It is 3D

18. Create a Venn diagram showing the relationship among these sets: multiples of 3, multiples of 6, multiples of 7.



19. Identify the hypothesis and conclusion of the following statement.

If a polygon has exactly 10 sides, it is a decagon.

Hyp: a polygon has 10 sides

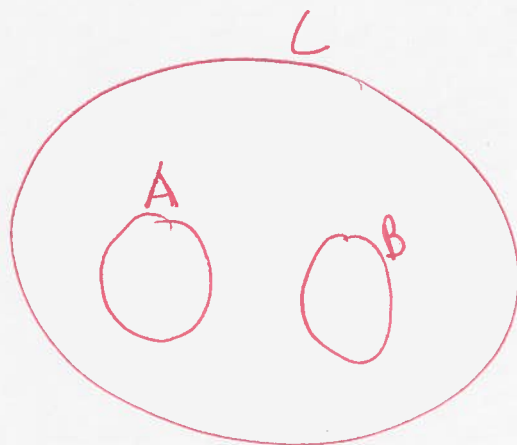
Conclusion: it is a ~~dec~~ decagon

20. Sets A, B, and C are described below. Create a Venn diagram showing the relationship among these sets.

A=movies that are 90 minutes long

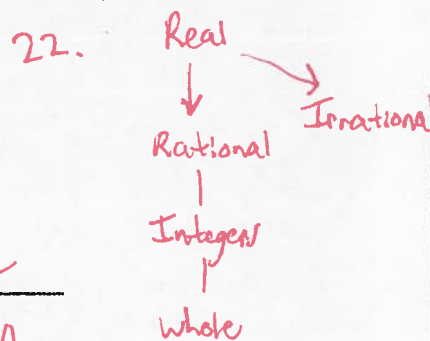
B=movies that are 120 minutes long

C=movies that are 60 minutes, 90 minutes, 120 minutes, and 180 minutes long

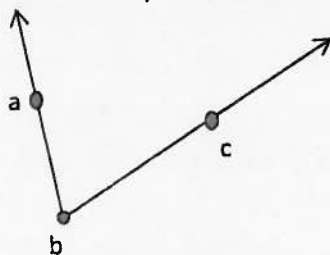


21. Refer to Question 20. Suppose D is the set of movies that are 60 minutes long. Represent set D in the Venn diagram for Question 20.

22. Make a hierarchy of the following sets of numbers: rational numbers, real numbers, whole numbers, irrational numbers, and integers.



23. Give three ways to name the angle below.



$\angle ABC$
 $\angle CBA$
 $\angle B$

24. Consider the following statement.

All four-legged animals are lions.

a. Write the statement in if-then form.

If it is a four legged animal, then it is a lion.

b. Give a counterexample that proves the statement is false.

Dog